

South Carolina House of Representatives
Ways and Means Healthcare Subcommittee
Flood Assessment Hearing

South Carolina Department of Mental Health
Flood Response

November 16, 2015
Presented by John H. Magill, State Director

**South Carolina House of Representatives
Ways and Means Healthcare Subcommittee
Flood Assessment Hearing**

Inpatient Facilities

Agency staff had some stressful hours at the Columbia hospitals – Bryan Psychiatric Hospital (BPH), Morris Village (MV), the William S. Hall Psychiatric Institute (WSHPI) -- and nursing homes (Tucker Center) during the October 3 - 5 period, with some water incursions at the hospitals, nursing homes and at the agency's energy plant. The Department's Physical Plant Services (PPS) staff responded to the situation during the storm, leaving their own homes in the dark and rain to report for duty to the facilities. The following action report was sent Sunday afternoon, October 4th, which succinctly summarizes how they responded:

On Oct 4, 2015, at 1:44 PM, "Mike W. Wiltshire" <mww75@SCDMH.ORG> wrote:
Situation report: Flooding in BPH Lodges A and B addressed. Water diverted and or pumped away from the buildings. BPH Pharmacy: Drains unclogged and water diverted. Morris Village Cottages water has been removed using wet vacs. The wet vacs will remain onsite until the end of the weather event. BPH energy plant: debris removed from the drain in the chiller yard and the water has receded from the chiller pumps and all electrical. MV dam is still intact. Siphon working and water running out of the north end emergency spillway. DOAS: sandbags held and sump pump working everything appears normal. No damage or water intrusion. Tucker Center: multiple window and roof leaks. PPSMT personnel on site to address.

We recently recognized the employees from PPS whose efforts during the storm helped to avert having to evacuate patients from the Columbia facilities, and helped to ensure the integrity of the dam. (Pictures attached.)

As noted, the Department owns an earthen dam with a sizable lake adjacent to Morris Village. It is classified as a "high hazard" dam due to the number of residential subdivisions below the dam. Earlier this year PPS had identified seepage through the dam and SCDMH had initiated a repair project, which had just reached the stage of beginning the drawdown of the lake the week before the storm struck. As noted, staff checked on the dam and kept the siphon in operation during the storm.

SCDMH inpatient facilities in Columbia also had to deal with serious nursing staff shortages during the event, as scheduled staff could not get to their facility to work, either because they themselves were impacted or because of infrastructure damage. Most of the nursing staff on duty at the outset of the storm had to remain at their posts without relief for, in some cases, days. Many managerial and administrative staff pitched in to fetch bottled water for the patients, and buy food for the clinical staff who were unable to leave their posts. Between the flood damage to roads and bridges, and public transportation being shut down, many of the agency's food service and custodial workers were also unable to report for work, so again, employees whose job duties have nothing to do with cooking and cleaning stepped up and cooked and cleaned to keep the hospitals and nursing homes operational. Through all of those efforts, SCDMH inpatient facilities in Columbia – G. Werber Bryan Psychiatric Hospital, Morris Village Alcohol and Drug Abuse Treatment Center, the William S. Hall Psychiatric Institute, the C.M. Tucker Nursing Care Center and the Sexually Violent Predator Treatment Program; a combined total of almost 800 beds – remained operational, as did the SCDMH facilities in Anderson and Walterboro.

Community Mental Health Centers

SCDMH Community Mental Health Centers clinics in Clarendon, Summerville, Sumter did sustain some damage. However, other than a number of Centers being closed for hazardous weather in accordance with

the State's hazardous weather policy, all 60 SCDMH outpatient clinic sites were and are open and providing mental health services. The clinic in Sumter which provides child and adolescent mental health services did have to relocate to rented space.

"Go Teams" Deployed

In accordance with the Department's and the State's Disaster Response plans, SCDMH Community Mental Health Centers (CMHCs) all have identified clinicians who are trained and prepared to deploy to affected locations to provide mental health assessment and treatment services to victims of disasters. These individuals are referred to as "Go Teams." On Monday, October 12, 2015, CMHC Go Teams were deployed to five sites: Lexington, Clarendon, Williamsburg (2 sites), and Florence. Another team was subsequently sent to the shelter in Cottageville (Colleton County.)

DSS Shelters

The South Carolina Department of Social Services (SCDSS) has the responsibility to open and staff Emergency Shelters in South Carolina, but long before this disaster had requested other State agencies to identify volunteers from their agency who would be willing to assist to staff shelters if needed. A number of SCDMH employees had earlier responded and provided their contact information. A number of these SCDMH staff volunteers were called upon to assist DSS staff the shelters in Clarendon County, Williamsburg County, Georgetown County, Horry County and Richland County.

Disaster Recovery Centers

FEMA with substantial assistance from State and local governments has been opening Disaster Recovery Centers (DRCs) in communities affected by the rain and floods. SCDMH Community Mental Health Centers have deployed staff to these sites to provide information and referral assistance for individuals needing mental health services. Currently, 32 DRCs are up and running.

Crisis Counselors

Upon the Presidential Declaration of a Disaster (October 5), SAMHSA contacted the Department of Mental Health to alert them of the declaration and make the Department aware it was eligible to apply for an Immediate Service Program as part of FEMA's Crisis Counseling Program. Crisis Counselor positions are in the nature of community outreach workers trained to assist in identifying individuals in the affected communities who may be in need of behavioral health services, and to refer and assist individuals to access services at the nearest SCDMH Community Mental Health Center, substance abuse treatment facility, or other appropriate behavior health setting. Crisis Counselors will operate in teams of two to six each, and spend most of each day traveling to the affected areas to reach as many citizens in need as possible.

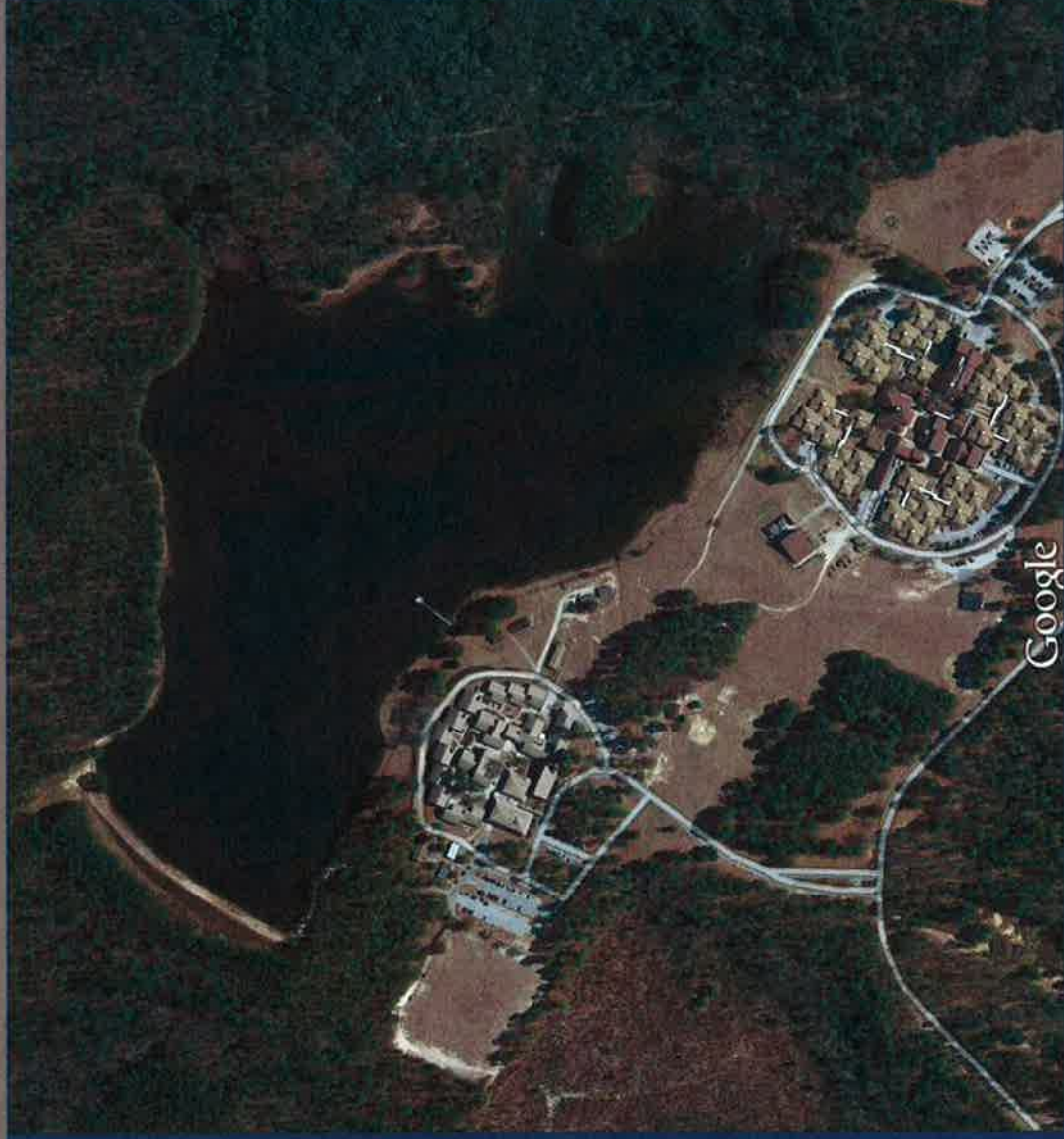
The Department applied for and received funds sufficient to place 24 outreach workers in areas affected by the disaster. Teams were trained in "Core Competency Skills" by a SAMHSA approved trainer on November 9 and 10 and oriented to their respective areas and resources available in each on the 12th and 13th. Four six-person teams will deploy from CMHC offices in Orangeburg, Georgetown, Manning, and Columbia on Monday, November 16, to serve those towns and surrounding areas. The Immediate Services Program is of short duration and to be replaced by a Regular Services Program which expands the duration of the program from 2 months to 11 months.

In addition, the Regular Services Program will add an additional 14 teams and serve all of the twenty-four counties now included in the Presidential Declaration of Disaster.

Budget Impact

There will be a significant adverse impact on SCDMH's FY2015 budget due to increased expenditures and decreased revenue. The Agency is still assessing the impact.

Morris Lake Dam





SC DMH Flood Related Costs

As of November 13, 2015

Direct Expenditures	25,301
(Santee-Wateree CMHC computers, water, sandbags)	
Staff Overtime & COMP Time	217,685
(Overtime and COMP Time 10,094.75 hours)	
Inpatient Water System	129,785
(Chlorination Services and installation of taps & valves for chlorination)	
Other Costs	120,869
(Capital Projects - Damage at Hall, Roddey roof, Tucker paving; Santee-Wateree CMHC - Damaged items & personal belongings)	

TOTAL ESTIMATED EXPENDITURES

493,641

Estimated Loss of Revenue - Community Mental Health Centers

Medicaid and all other insurers	1,045,190
*As of November 13, 2015	

TOTAL ESTIMATED LOSS OF REVENUE

1,045,190

TOTAL ESTIMATED IMPACT

1,538,831

South Carolina Department of Mental Health

Key Agency Representatives

John H. Magill, State Director

Geoff Mason, Deputy Director, Community Mental Health Services

Versie Bellamy, Deputy Director, Inpatient Services

Robert Bank, M.D., Medical Director

Mark Binkley, Esq., Deputy Director, Administrative Services

Alan Powell, Esq., General Counsel

Kimberly Rudd, M.D., DIS Medical Director

Dave Schaefer, Director, Financial Service

Rochelle Caton, Director, Office of Client Advocacy/Legislative Liaison (898-8570, 201-8683, rrc57@scdmh.org)